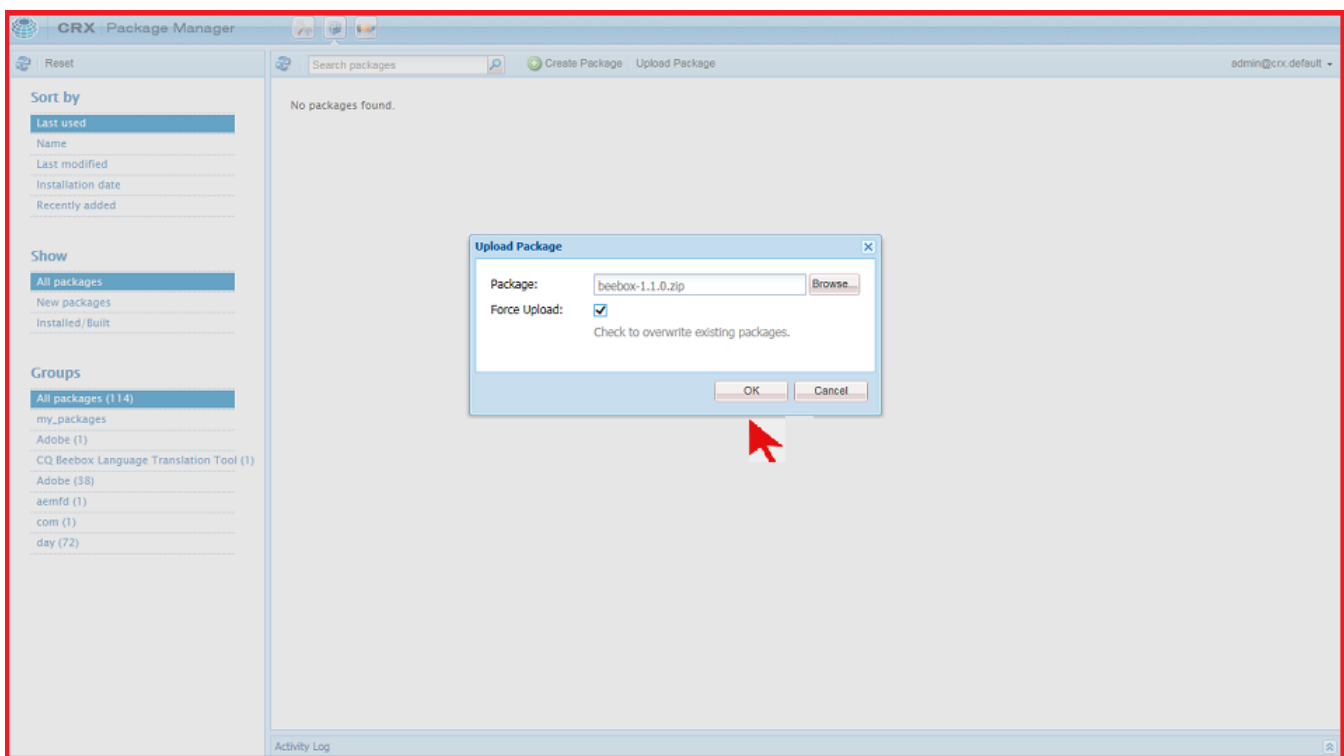


How to install Wordbee Beebox Connector for Adobe Experience Manager

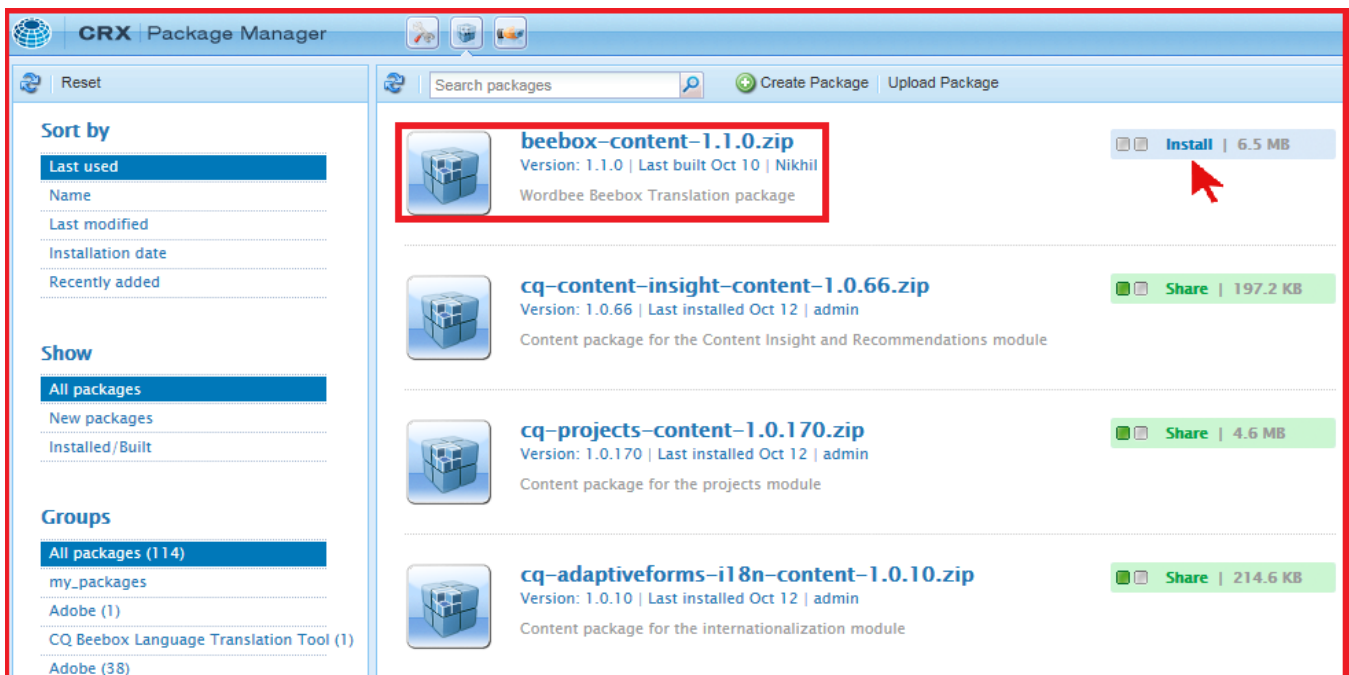
Make sure that you have installed a Beebox Server instance or you have subscribed to a hosted Beebox. You can obtain trial versions from Wordbee. Carefully read the [prerequisites](#) before you proceed. This guide can also be found on our [documentation help desk](#).

Plugin installation

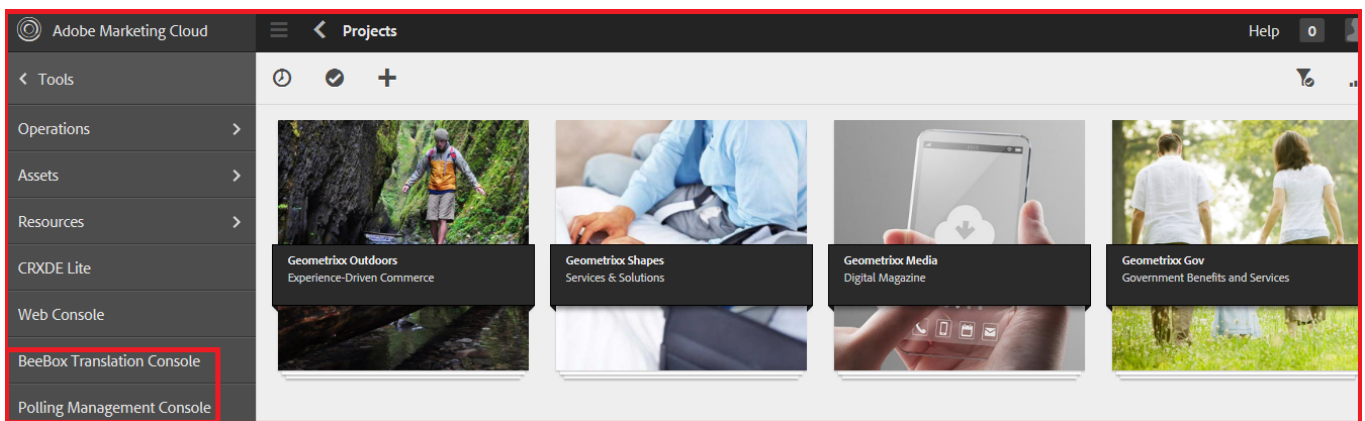
1. Open your **AEM** site **CRX Package Manager** window in browser
i.e. <http://localhost:4502/crx/packmgr/index.jsp>.
2. Press **Upload Package** -> **browse and select** AEM connector zip file.
3. Check **Force Upload** if required.
4. Press **Ok**



5. Finally, Press **Install**. A confirmation message will pop up -> press **Install** again.



Once the installation is successful, open your AEM site in administrative mode. You will observe two new tabs "**Beebox Translation Console**" and "**Polling Management Console**" as shown below:



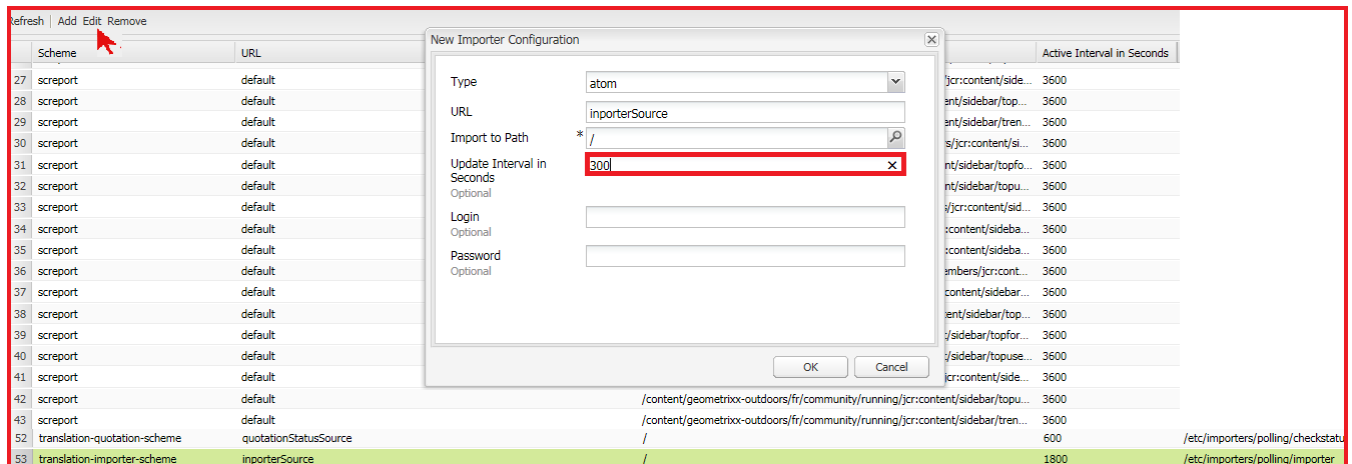
- **Beebox Translation Console:** Pressing this tab would open the main screen of AEM connector which let's user to complete translation workflow i.e. sending items for quotation, sending items for translation, retrieving and importing translations back after translation.
- **Polling Management Console:** This screen is basically for the administrator users only to select the **Frequency** (in seconds) for receiving **Quotation and translation import** background jobs.

Polling configuration (optional)

It is possible to configure the frequency for receiving **Quotation and translation import** background jobs. By default, the connector is configured to retrieve:

- The status of the quotations and jobs every 10 minutes (600 seconds).
- The translations every 30 minutes (1800 seconds).

To change time interval for any of these jobs, use the **Polling Management Console**, select the job and press **Edit** and finally change the update interval as shown below and press **Ok**.



	Scheme	URL	Active Interval in Seconds
27	screport	default	
28	screport	default	
29	screport	default	
30	screport	default	
31	screport	default	
32	screport	default	
33	screport	default	
34	screport	default	
35	screport	default	
36	screport	default	
37	screport	default	
38	screport	default	
39	screport	default	
40	screport	default	
41	screport	default	
42	screport	default	
43	screport	default	
52	translation-quotation-scheme	quotationStatusSource	600
53	translation-importer-scheme	importerSource	1800

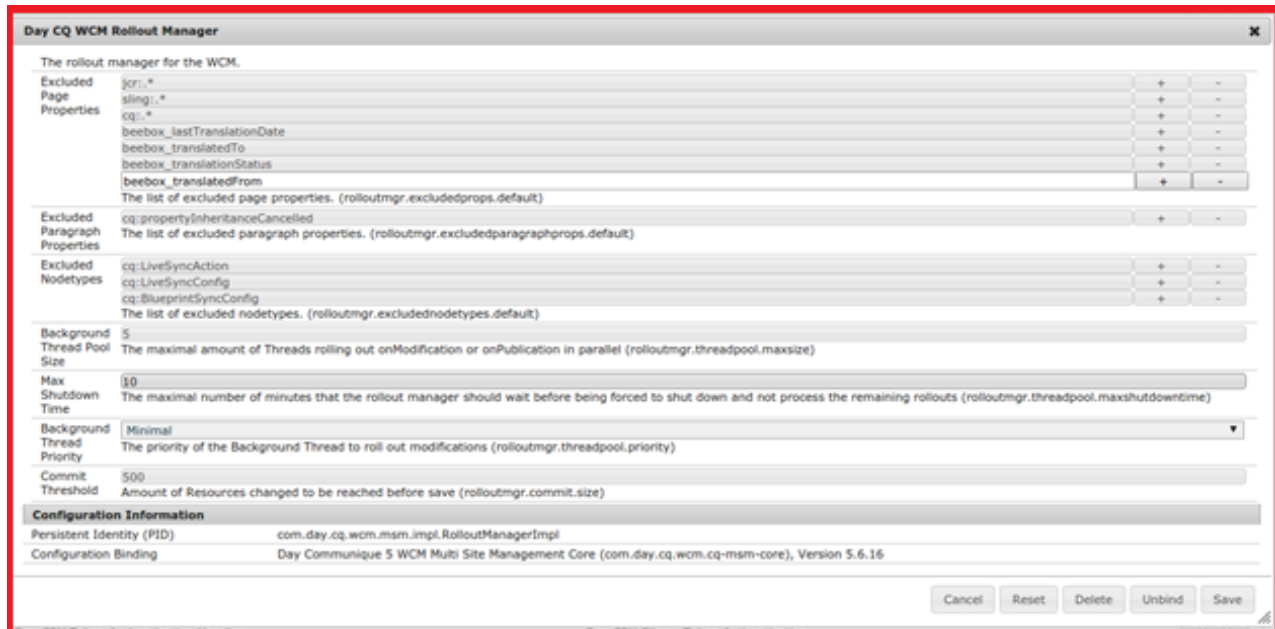
Rollout configuration (recommended)

This part is related to the configuration of the AEM Rollout feature, to avoid AEM to copy the Beebox properties on the copied pages.

Although it is needed only if you use the Rollout feature of AEM, then please consider configuring these settings.

To disable the copy of these properties,

- In the AEM administration, select **Web Console** (i.e. <http://localhost:4502/system/console/configMgr>)
- Part 1: Day CQ WCM Rollout Manager
 - Search for a configuration named **Day CQ WCM Rollout Manager** and edit it.



The screenshot shows the configuration page for the Day CQ WCM Rollout Manager. It includes sections for Excluded Page Properties, Excluded Paragraph Properties, Excluded Nodetypes, Background Thread Pool Size, Max Shutdown Time, Background Thread Priority, and Commit Threshold. A Configuration Information section at the bottom shows the Persistent Identity (PID) and Configuration Binding.

- Add the following properties, in the Excluded Page Properties setting:
 - beebox_lastTranslationDate
 - beebox_translationStatus
 - beebox_translatedTo
 - beebox_translatedFrom
- Save the settings
- Part 2: CQ MSM Content Update Action

We need to configure the *CQ MSM Content Update Action* to avoid AEM to update the Beebox properties of the copied pages, when the parent is modified.

 - Search for a configuration named CQ MSM Content Update Action and edit it.



The screenshot shows the configuration page for the CQ MSM Content Copy Action. It includes sections for Excluded Page Properties, Excluded Paragraph Items, Excluded Nodetypes, and Configuration Information. The Configuration Information section shows the Persistent Identity (PID) and Configuration Binding.

- As before, add the following properties in the Excluded Page Properties setting:
 - beebox_lastTranslationDate
 - beebox_translationStatus
 - beebox_translatedTo
 - beebox_translatedFrom
- Save the settings

Next step : [Configuring the plugin](#)